

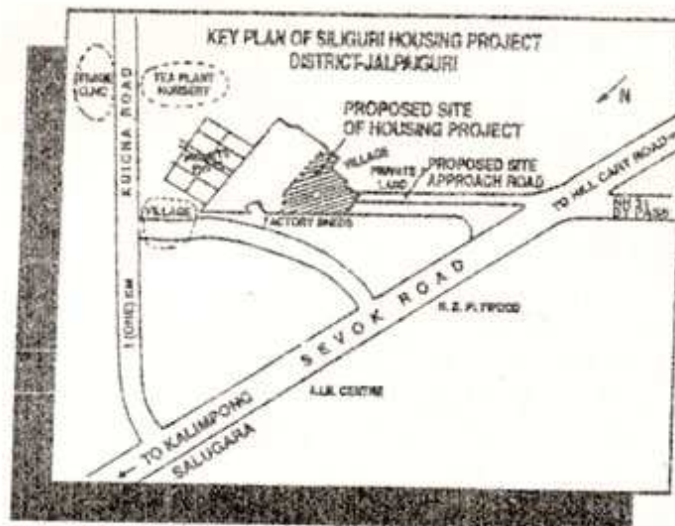
This information Guide is to be read with General Terms & Conditions.

# INFORMATION GUIDE

## OWNERSHIP FLATS & HOUSES AT SILIGURI HOUSING PROJECT PHASE-I

1. **Location :** The Siliguri Housing Project is located by the side of Sevok Road near DON BOSCO SCHOOL adjacent to the crossing of Sevok Road and N.H. 31 by-pass.

Key Map



### 2. Particulars of the Project :

Type	No. of D.U.	Plinth area (sq.m.) (Approx)	Provisional Sale Price (Rs.)	Application Money (Rs.)
MIG	46	34.40 sq.m.	Rs. 1,63,500/-	Rs. 7,500/-
HIG-A	41	47.75 sq.m.	Rs. 2,35,000/-	Rs. 10,800/-
HIG-B	22	65.30 sq.m.	Rs. 3,34,500/-	Rs. 15,400/-
HIG-C	13	81.70 sq.m.	Rs. 4,15,700/-	Rs. 19,000/-
3K Plot with single Storied House (HIG)	1	94.75 sq.m.	Rs. 6,81,800/-	Rs. 31,300/-

Gross monthly income for MIG-Rs. 4,501/- to Rs. 7,500/- & for HIG Rs. 7,501/- & above.